

SHADE
FABRIC
collection

Sundance
Window Coverings

MANCHESTER

LIGHT-FILTERING (L/F)
<1% OPENNESS FACTOR

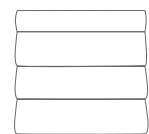
BLACKOUT (B/O)
0% OPENNESS FACTOR

DECORATIVE

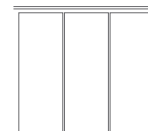
The sleek style of Manchester is accomplished by its beautiful linen-like material that softly filters natural light. This high-end natural-looking textile is also available in a blackout style to block nearly all light from entering interiors.



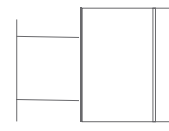
RO LLER
SH AD ES



RO MA N
SH AD ES



PA NE L
TR AC KS



SK YLIG H T
TR AC KS



BURLAP CHESTER

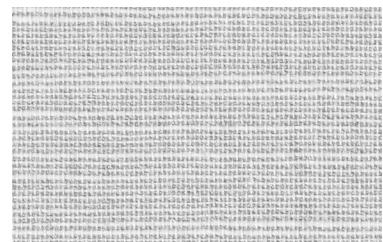
(L/F) 1104 (B/O) 1904



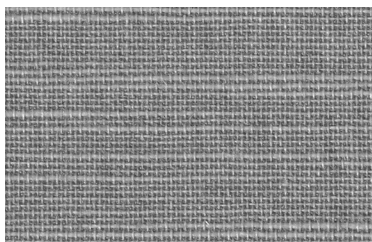
UNITED WHITE (L/F) 1111 (B/O) 1911



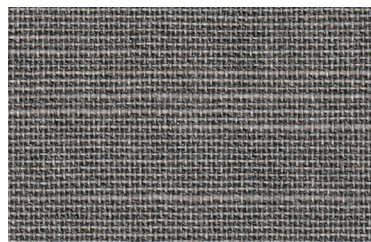
BEIGE WALES (L/F) 1112 (B/O) 1912



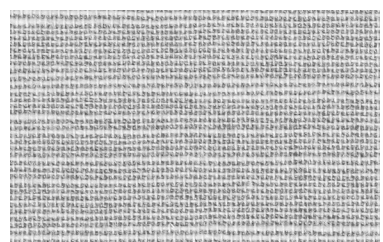
FOGGY LAKE (B/O) 1913 (L/F) 1113



YORK SHADOW (L/F) 1115 (B/O) 1915



DARK TRAIN (L/F) 1116 (B/O) 1916



GRAY CHESTER (L/F) 1114 (B/O) 1914

* (L/F) stands for light-filtering and (B/O) stands for blackout

FABRICATION METHODS

Cutting: Cold Cut, Ultrasonic, Crush Cut or Laser

Seaming / Hemming: Thermal, High-Frequency, Ultrasonic or Sewing.

PRODUCT SPECIFICATIONS

COMPOSITION	100% Polyester
ROLL WIDTH	118"
ROLL LENGTH	33 yd
WEIGHT / YD ²	(L/F) 6.48 oz/yd ² (B/O) 9.72 oz/ yd ²
THICKNESS	(L/F) .016" ± 5% (B/O) .020" ± 5%
COLOR FASTNESS	4.5 (AATCC 16-2003)

CARE AND CLEANING

Remove dust with vacuum cleaner or compressed air. Do not scrub. Do not use solvents or any abrasive substance which might damage the coating on the fabric. Clean with a sponge or a soft brush dipped in soapy water using mild detergent. Rinse with clean water. Leave the shade down until completely dry. You can also rub the fabric very gently with a clean white pencil eraser to remove small stains.

CERTIFICATIONS, TESTS, AND WARRANTY

CALIFORNIA
TITLE 19

FLAME RETARDANT

OEKO-TEX®
STANDARD
100

FREE OF HARMFUL
CHEMICALS

UL
GREENGUARD
GOLD

HEALTHY INDOOR
AIR QUALITY

ROHS
COMPLIANT

FREE OF HARMFUL
METALS

10 YEAR
WARRANTY

QUALITY
GUARANTEED

ASTM
G-21 &
E-2180

BACTERIA &
FUNGAL RESISTANCE

Sundance
Window Coverings