

SUNDANCE ZIP SCREEN



Accessories overview



Accessories introduction



Basic parameters



Accessories details

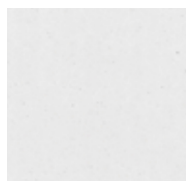


The high-strength 6063 aluminum is made from corrosion-resistant material and features a unique outdoor powder coating to prevent fading for years to come.

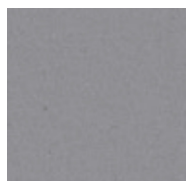


Aluminum colors

Standard color card



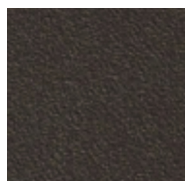
White



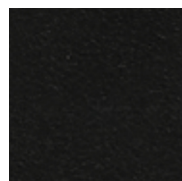
Light gray



Beige



Brown



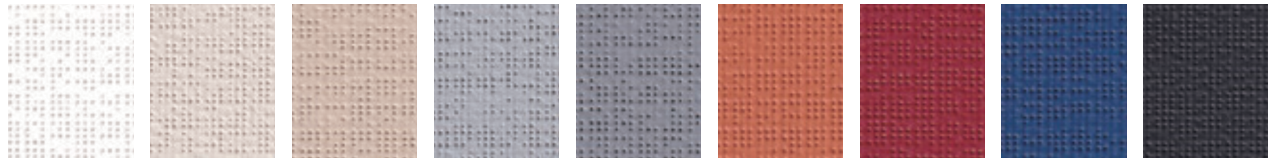
Black



Fabric Selection

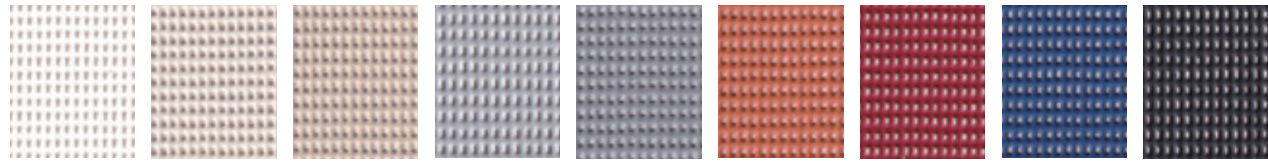
TSL FABRIC

TSL-MY (Openness Factor 4%)



TSL-MY-401 TSL-MY-402 TSL-MY-403 TSL-MY-404 TSL-MY-405 TSL-MY-406 TSL-MY-407 TSL-MY-408 TSL-MY-409

TSL-M3 (Openness Factor 14%)



TSL-M3-1401 TSL-M3-1402 TSL-M3-1403 TSL-M3-1404 TSL-M3-1405 TSL-M3-1406 TSL-M3-1407 TSL-M3-1408 TSL-M3-1409

CLASSIC FABRIC

SC-E1 (Fiberglass Material, Openness Factor 6%)



SC-E1-601 SC-E1-602 SC-E1-603 SC-E1-604 SC-E1-605 SC-E1-606 SC-E1-607 SC-E1-608

SC-E4 (Openness Factor 15%, 25%)



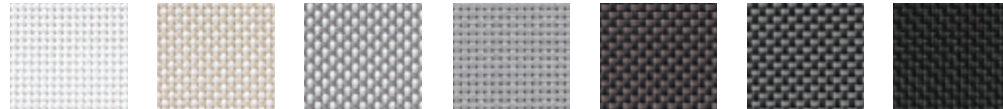
SC-E4-01 SC-E4-02 SC-E4-03 SC-E4-04 SC-E4-05 SC-E4-06 SC-E4-07 SC-E4-08 SC-E4-09

YM-42 (Fiberglass Material, Blackout)



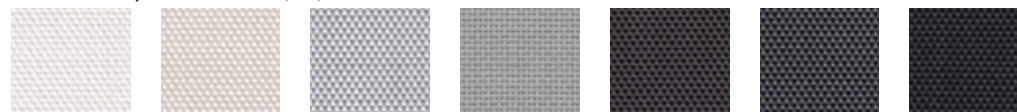
YM-4201 YM-4203 YM-4205 YM-4206

SC-A1 (Openness Factor 5%)



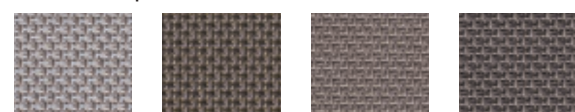
SC-A1-501 SC-A1-502 SC-A1-503 SC-A1-506 SC-A1-508 SC-A1-510 SC-A1-511

SC-A2 (Openness Factor 0%, 1%, 3%)



SC-A2-101 / SC-A2-301 SC-A2-102 / SC-A2-302 SC-A2-003 SC-A2-103 SC-A2-303 SC-A2-006 / SC-A2-306 SC-A2-008 SC-A2-108 SC-A2-308 SC-A2-010 SC-A2-110 SC-A2-310 SC-A2-011 SC-A2-111 SC-A2-311

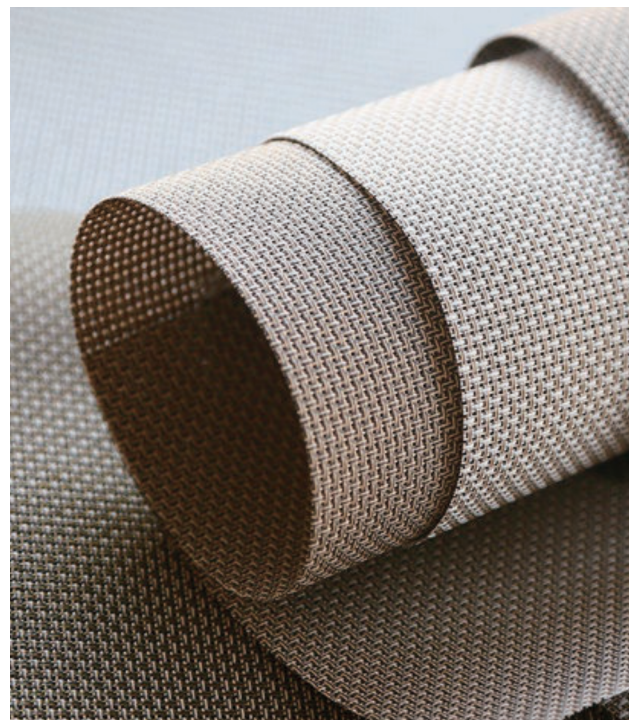
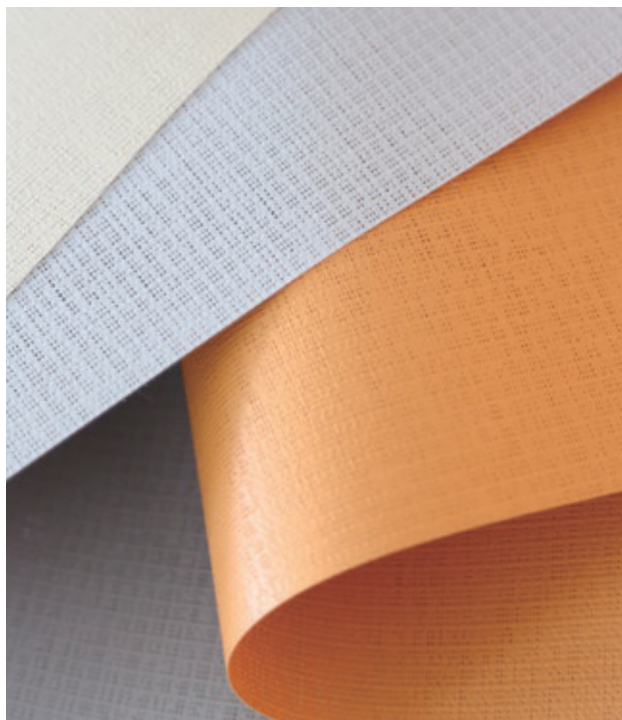
SC-U2 (Openness Factor 9%)



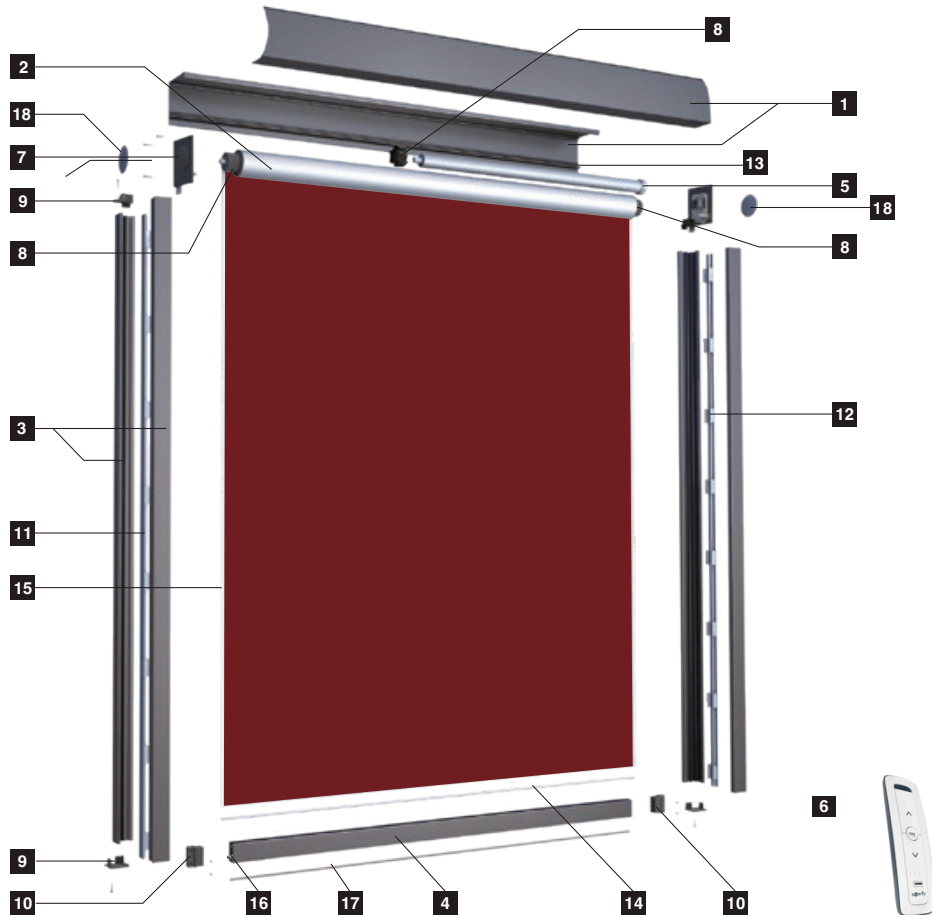
SC-U2-901 SC-U2-902 SC-U2-903 SC-U2-904

Fabric Basic Parameter

Product	Weight	Thickness	Yarn Count	Openness Factor	Color Fastness
TSL-Model Y	440g/m ² ±5%	0.45mm±5%	/	4%	8 Grade
TSL-Model 3	390g/m ² ±5%	0.50mm±5%	/	14%	8 Grade
SC-E1 (Fiberglass)	495g/m ² ±5%	0.62mm±5%	40 * 24	6%	8 Grade
SC-E4	436g/m ² ±5%	0.71mm±5%	23 * 23	15%	8 Grade
SC-E4	360g/m ² ±5%	0.62mm±5%	19 * 19	25%	8 Grade
YM42	480g/m ² ±5%	0.38mm±5%	/	Blackout	8 Grade
SC-A2	658g/m ² ±5%	0.83mm±5%	60 * 42	0%	8 Grade
SC-A2	428g/m ² ±5%	0.73mm±5%	48 * 46	1%	8 Grade
SC-A2	440g/m ² ±5%	0.65mm±5%	54 * 44	3%	8 Grade
SC-A1	520g/m ² ±5%	0.75mm±5%	36 * 36	5%	8 Grade
SC-U2	425g/m ² ±5%	0.75mm±5%	48 * 46	9%	8 Grade



SUNDANCE 06 ZIP SCREEN



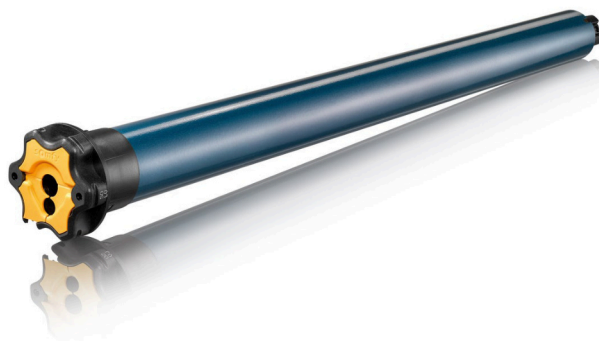
1. Accessories overview

- | | | |
|-------------------------|-------------------------------|-------------------------------|
| 1 Headrail | 8 Motor drive kit | 15 Zipper |
| 2 Aluminum tube | 9 Side rail cap kit | 16 Counterweight |
| 3 Side rail | 10 Bottom rail cap kit | 17 Rubber buffer |
| 4 Bottom rail | 11 Inner track | 18 Metal Sundance logo |
| 5 Motor | 12 Mute sponge | |
| 6 Remote control | 13 Mute tape | |
| 7 Side cap kit | 14 Fabric fix rod | |

Power your Sundance Exterior shades with Somfy's Maestria™ 50 RTS

The Ultimate Motor Solution for Exterior Shades

The Maestria™ was specifically designed to motorize all types of Exterior shades and works with Somfy's wide range of controls. This innovative motor offers state-of-the-art functionalities such as obstacle detection and automatic adjustment.



Situo® 5 RTS Pure II Luxury with Precision

The Situ® hand-held 5-channel remote can control either a single Exterior shade or a group of Exterior shades. It's sleek, modern finish complements any décor.

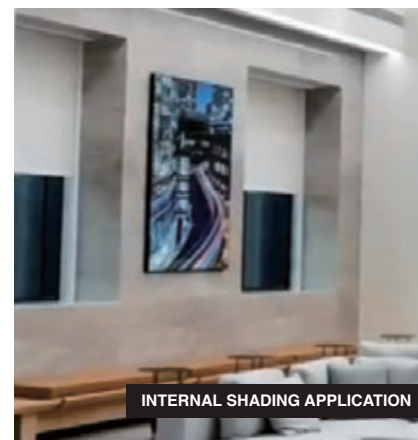
Exclusive Somfy "my" feature saves a favorite/preferred shade position.

RTS is omni-directional, so no need to aim the remote at the product being controlled.

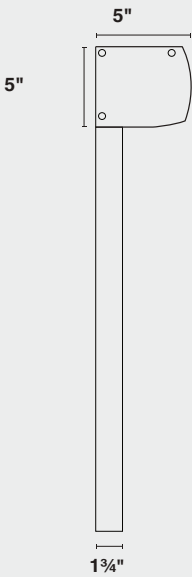
Sundance Exterior shades, when paired with Somfy's Maestria™ motor and the Situ® remote, offer the ideal combination of performance and luxury.



Applicable environment

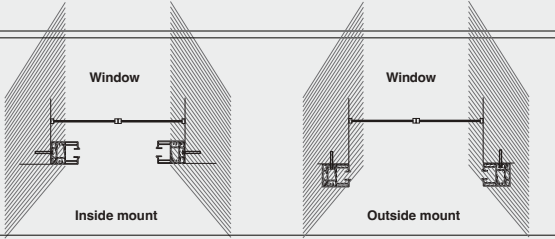


Basic parameters



(Limit value)	Max: 20ft wide and 11.48ft high	Min: 2.3ft wide and 3.28ft high
(Color)	White/Dark grey/Light grey/Dark brown/Black	
(Control)	Remote control	
(Material)	Aluminum alloy profile + nylon accessories	
(Windproof grade)	Level 10 (static wind pressure value>1200Pa)	

Installation top view



Maximum installation area

Width: 19.685ft Height: 11.48ft

Minimum installation area

Width: 2.3ft Height: 3.28ft

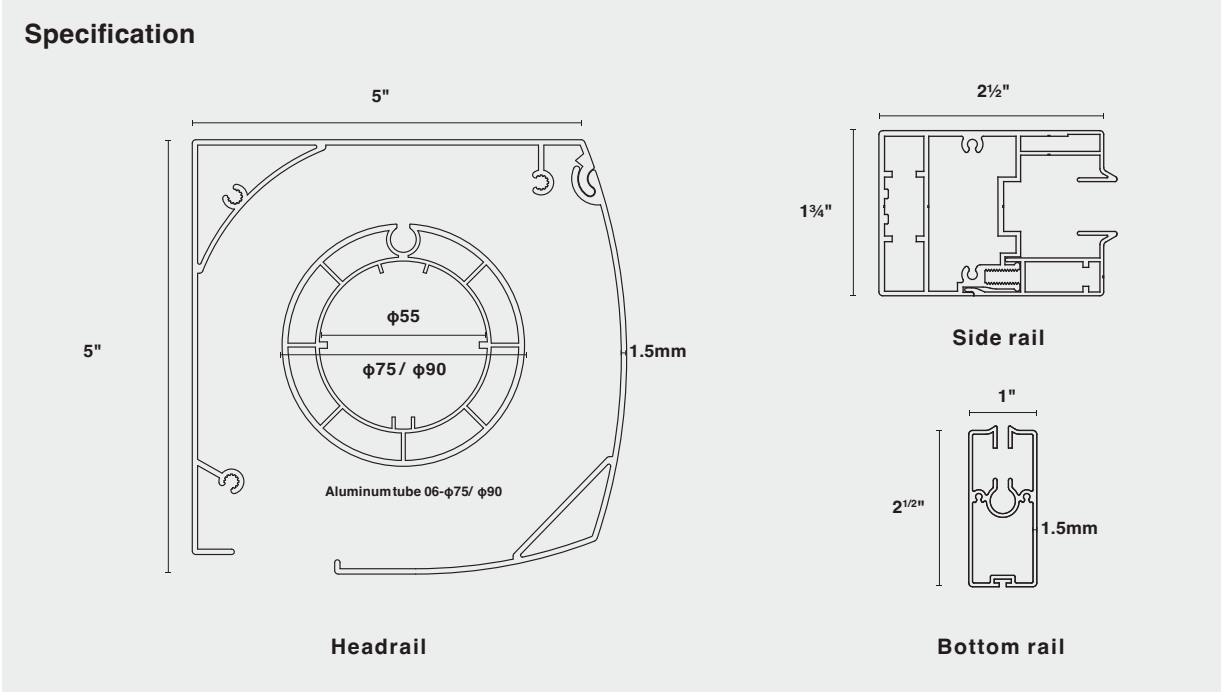


Aluminum tube

Aluminum tube $\phi 75$ for blind width is 2.30-16.4ft, aluminum tube $\phi 90$ for blind width is 16.4-19.685ft. Please refer to the follow-up introduction for details of motor drive kit.

Aluminum tube selection		Width					
		2.30ft	6.56ft	9.84ft	13.12ft	16.4ft	19.685ft
Height	3.28ft	Aluminum tube $\phi 75$					Aluminum tube $\phi 90$
	6.56ft						
	9.84ft						
	11.48ft						

Basic parameters



Counterweight description

Counterweight can be added to the bottom rail, and 4 pieces of galvanized flat iron (each 5mm thick) can be stacked according to the width.



Counterweight requirement		Width						
		2.30ft	3.28ft	6.56ft	9.84ft	13.12ft	16.4ft	19.685ft
Height	0-3.28ft	4PCS			4.92ft galvanized flat iron on both sides, PVC tube in the middle			
	3.28-6.56ft							
	6.56-11.48ft							

Motor description

Different width blinds with different specifications of motors.

Width						
2.3ft	3.28ft	6.56ft	9.84ft	13.12ft	16.4ft	19.685ft
20N Motor					40N Motor	

Fabric cutting instructions

Different width blinds need to be cut into different sizes of fabrics.

Width						
2.3ft	3.28ft	6.56ft	9.84ft	13.12ft	16.4ft	19.685ft
(Fabric reduce) 107mm		108mm	109mm	110mm		