

SHADE  
FABRIC  
collection

**Sundance**  
Window Coverings

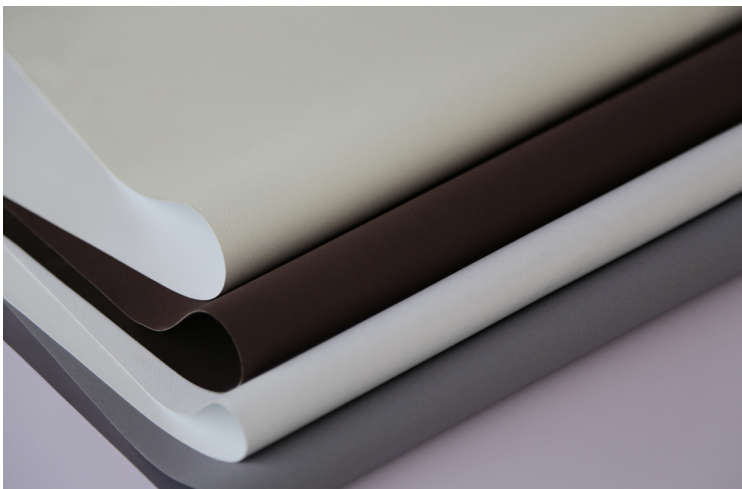
# ALLURE

---

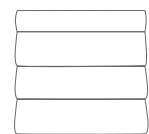
BLACKOUT (B/O)  
0% OPENNESS FACTOR



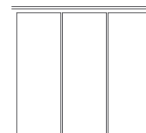
Commercial interiors requiring a blackout roller shade with matching room side and street side colors can accomplish their exterior and interior aesthetic goals with Allure. The fabric's backside can be selected to meld nicely with glass color, allowing the shades to be consistent with the building facade's design intent.



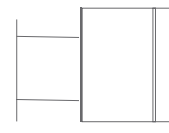
RO LLER  
SH AD ES



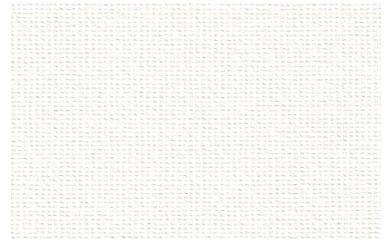
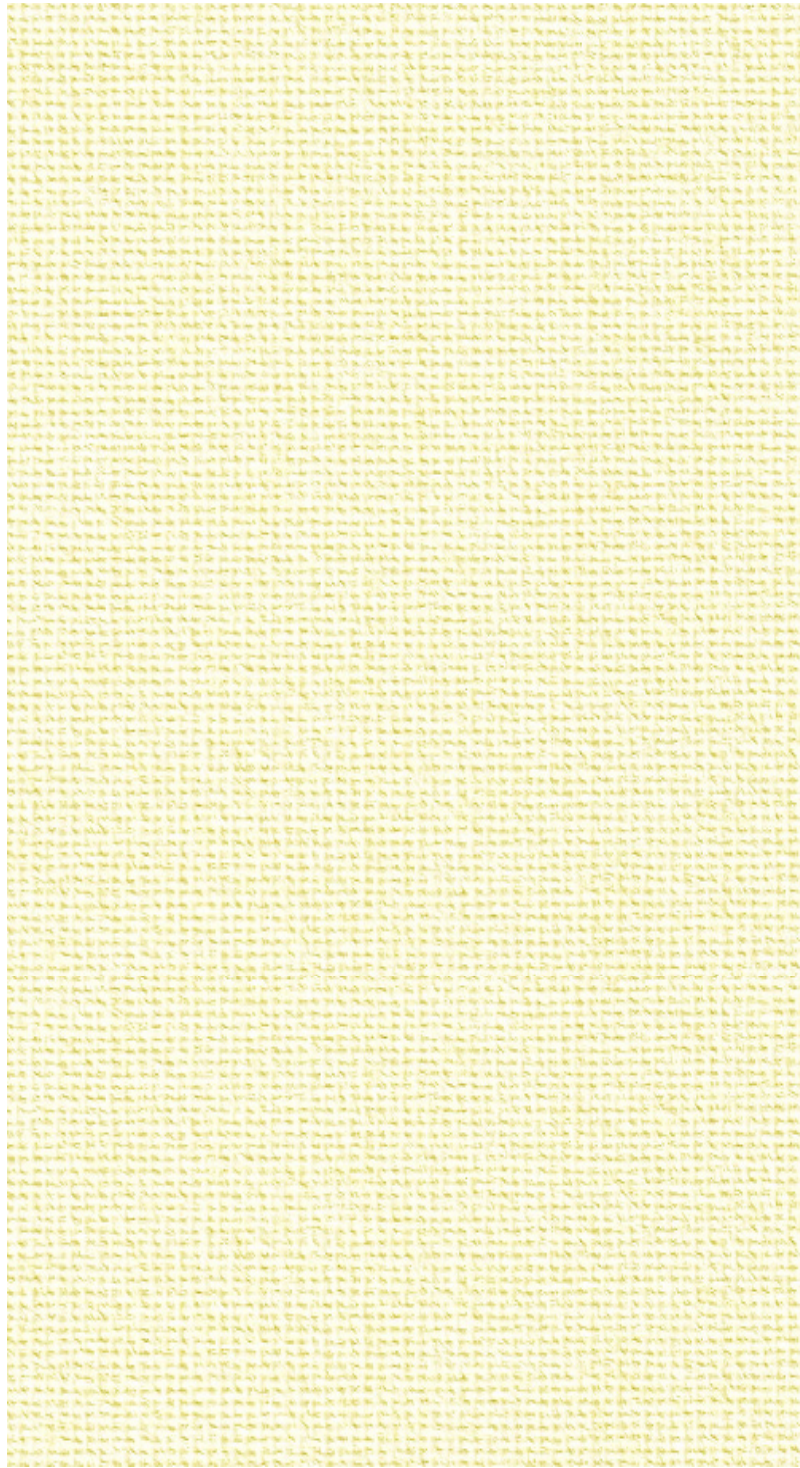
RO MA N  
SH AD ES



PA NE L  
TR AC KS

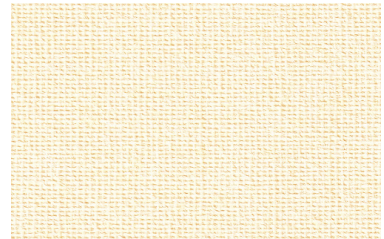


SK YLIGHT  
TR AC KS



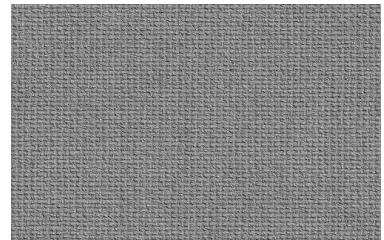
WHITE SNOW

6531



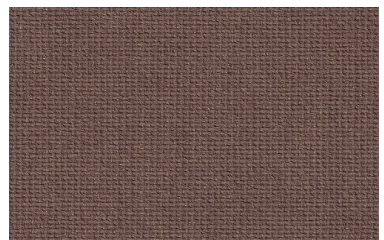
LIGHT SUNDEW

6532



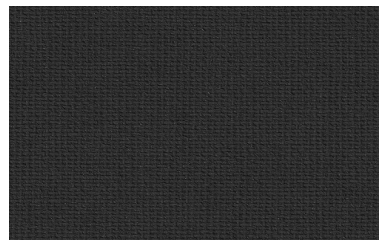
MYSTIC GRAY

6539



BROWN PENNY

6540



BLACKORE

6542

IVORY CREAM

6523

## FABRICATION METHODS

---

Cutting: Cold Cut, Ultrasonic, Crush Cut or Laser

Seaming / Hemming: Thermal, High-Frequency, Ultrasonic or Sewing.

## PRODUCT SPECIFICATIONS

---

COMPOSITION	100% Polyester
ROLL WIDTH	98"
ROLL LENGTH	33 yd
WEIGHT / YD <sup>2</sup>	8.54 oz/ yd <sup>2</sup>
THICKNESS	(L/F) .017" ± 5%
COLOR FASTNESS	4.5 (AATCC 16-2003)

## CARE AND CLEANING

---

Remove dust with vacuum cleaner or compressed air. Do not scrub. Do not use solvents or any abrasive substance which might damage the coating on the fabric. Clean with a sponge or a soft brush dipped in soapy water using mild detergent. Rinse with clean water. Leave the shade down until completely dry. You can also rub the fabric very gently with a clean white pencil eraser to remove small stains.

## CERTIFICATIONS, TESTS, AND WARRANTY

---

CALIFORNIA  
TITLE 19

FLAME RETARDANT

OEKO-TEX®  
STANDARD  
100

FREE OF HARMFUL  
CHEMICALS

UL  
GREENGUARD  
GOLD

HEALTHY INDOOR  
AIR QUALITY

ROHS  
COMPLIANT

FREE OF HARMFUL  
METALS

10 YEAR  
WARRANTY

QUALITY  
GUARANTEED

ASTM  
G-21 &  
E-2180

BACTERIA &  
FUNGAL RESISTANCE

**Sundance**  
Window Coverings