

SUN COOI
FABRICS

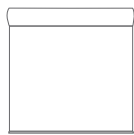
Sundance
Window Coverings

SHANTUNG

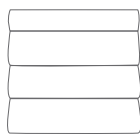
OPENNESS FACTOR 10%
SCREEN FABRIC
DECORATIVE



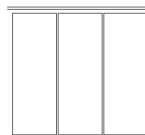
The undulating weave pattern and soft colors of Shantung evoke a sense of elegance while creating depth, texture, and interest. Shantung is an excellent fabric for spaces where higher levels of natural light are desired.



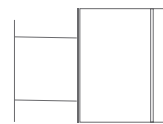
ROLLER
SHADES



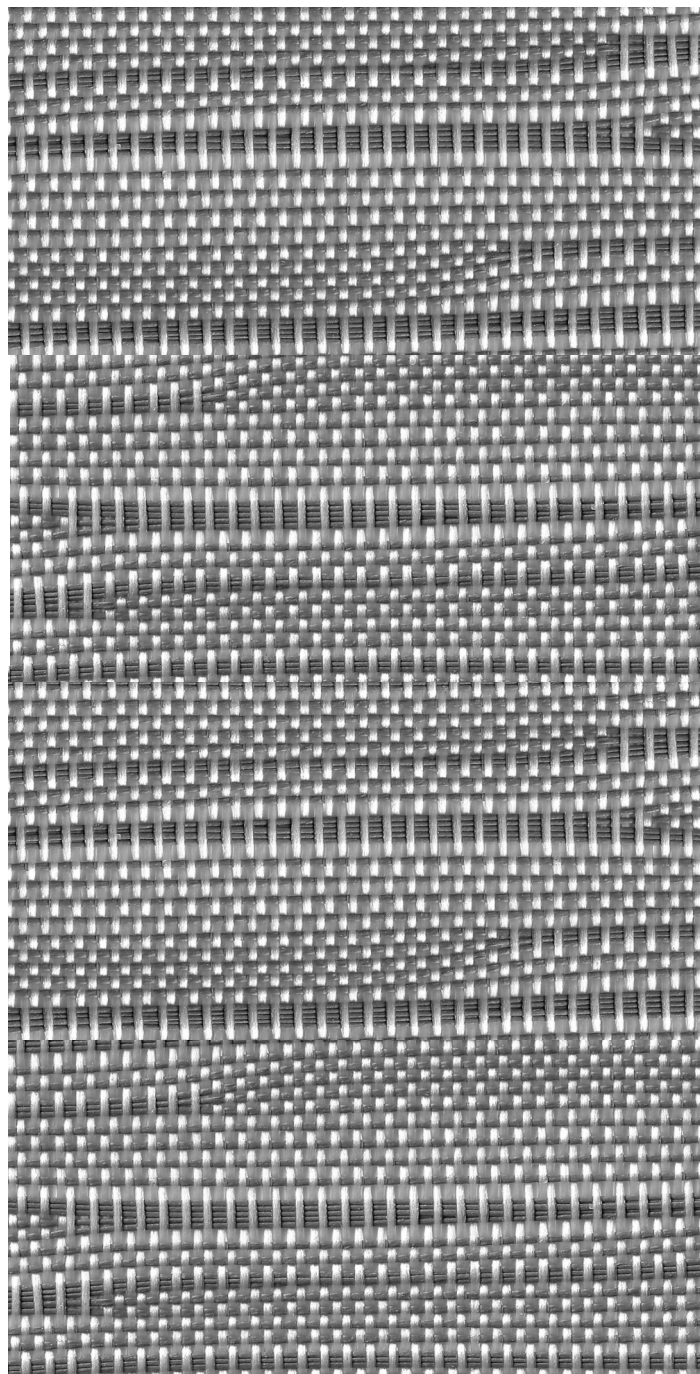
ROMAN
SHADES



PANEL
TRACKS

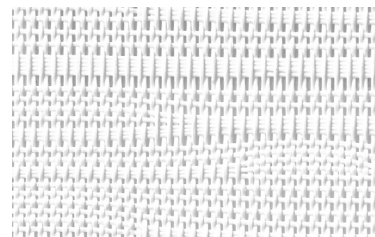


SKYLIGHT
TRACKS



DARK GRAY

SC-T7-1005



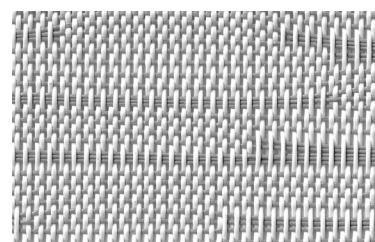
WHITE

SC-T7-1001



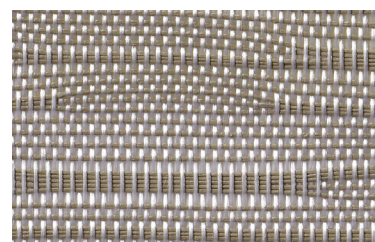
LINEN

SC-T7-1002



LIGHT GRAY

SC-T7-1003



BEIGE

SC-T7-1004

FABRICATION METHODS

Cutting: Cold Cut, Ultrasonic, Crush Cut or Laser

Seaming / Hemming: Thermal, High-Frequency, Ultrasonic or Sewing.

PRODUCT SPECIFICATIONS

COMPOSITION	30% Polyester + 70% PVC
ROLL WIDTH	118"
ROLL LENGTH	33 yd
WEIGHT / YD ²	13.31 oz/yd ²
THICKNESS	.041" ± 5%
COLOR FASTNESS	8 Grade (SGS)
YARN COUNT	38*26
BREAKING STRENGTH	Warp 2600 N/5cm Weft 2600 N/5cm

CARE AND CLEANING

Remove dust with vacuum cleaner or compressed air. Do not scrub. Do not use solvents or any abrasive substance which might damage the coating on the fabric. Clean with a sponge or a soft brush dipped in soapy water using mild detergent. Rinse with clean water. Leave the shade down until completely dry. You can also rub the fabric very gently with a clean white pencil eraser to remove small stains.

CERTIFICATIONS, TESTS, AND WARRANTY

CALIFORNIA TITLE 19	OEKO-TEX® STANDARD 100	UL GREENGUARD GOLD	ROHS COMPLIANT	10 YEAR WARRANTY	ASTM G-21 & E-2180	NFPA® 701-TM
FLAME RETARDANT	FREE OF HARMFUL CHEMICALS	HEALTHY INDOOR AIR QUALITY	FREE OF HARMFUL METALS	QUALITY GUARANTEED	BACTERIA & FUNGAL RESISTANCE	FIRE RETARDANT

Sundance
Window Coverings