

SUN COOL
FABRICS

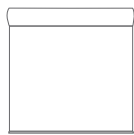
Sundance
Window Coverings

OMEGA 3%

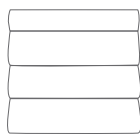
OPENNESS FACTOR 3%
SCREEN FABRIC



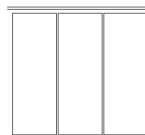
Omega is a popular fabric known for its simplicity of design, balanced weave, application versatility, and overall excellent solar control performance. All colors are available in openness factors 1%, 3%, and 5% for ultimate daylight control.



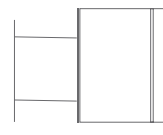
ROLLER
SHADES



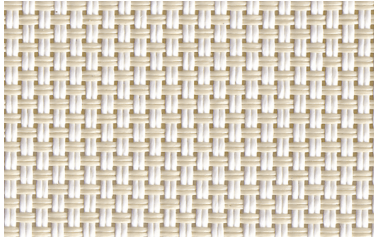
ROMAN
SHADES



PANEL
TRACKS

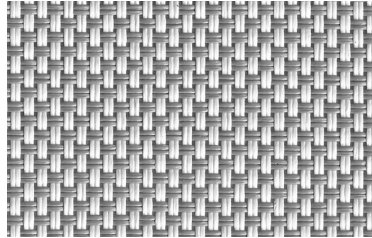


SKYLIGHT
TRACKS



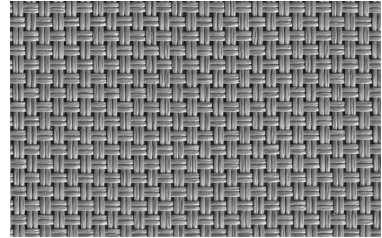
WHITE/LINEN

SC-A2-302



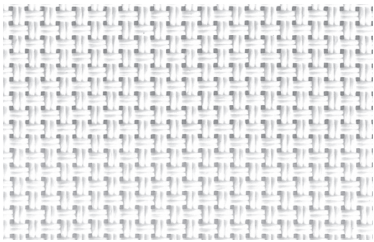
WHITE/GRAY

SC-A2-303



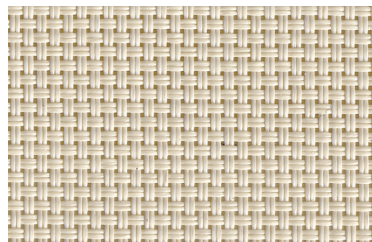
GRAY/GRAY

SC-A2-306



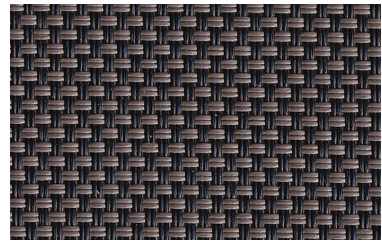
WHITE/WHITE

SC-A2-301



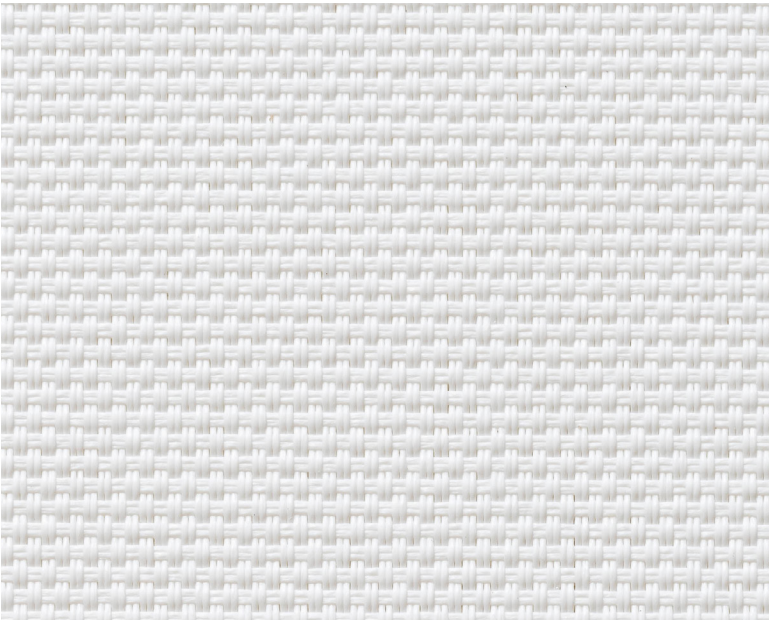
TAN/TAN

SC-A2-304



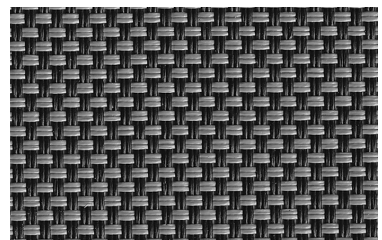
BLACK/BRONZE

C-A2-308



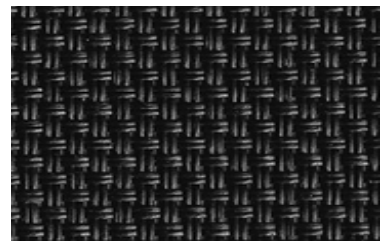
BRIGHT WHITE

SC-A2-300



BLACK/GRAY

SC-A2-310



BLACK/BLACK

SC-A2-311

FABRICATION METHODS

Cutting: Cold Cut, Ultrasonic, Crush Cut or Laser

Seaming / Hemming: Thermal, High-Frequency, Ultrasonic or Sewing.

PRODUCT SPECIFICATIONS

COMPOSITION	30% Polyester + 70% PVC
ROLL WIDTH	98" / 118"
ROLL LENGTH	33 yd
WEIGHT / YD ²	12.96 oz/yd ²
THICKNESS	.026" ± 5%
COLOR FASTNESS	8 Grade (SGS)
YARN COUNT	54*44
BREAKING STRENGTH	Warp 1800 N/5cm Weft 1434 N/5cm

CARE AND CLEANING

Remove dust with vacuum cleaner or compressed air. Do not scrub. Do not use solvents or any abrasive substance which might damage the coating on the fabric. Clean with a sponge or a soft brush dipped in soapy water using mild detergent. Rinse with clean water. Leave the shade down until completely dry. You can also rub the fabric very gently with a clean white pencil eraser to remove small stains.

CERTIFICATIONS, TESTS, AND WARRANTY

CALIFORNIA TITLE 19	OEKO-TEX® STANDARD 100	UL GREENGUARD GOLD	ROHS COMPLIANT	10 YEAR WARRANTY	ASTM G-21 & E-2180	NFPA® 701-TM
FLAME RETARDANT	FREE OF HARMFUL CHEMICALS	HEALTHY INDOOR AIR QUALITY	FREE OF HARMFUL METALS	QUALITY GUARANTEED	BACTERIA & FUNGAL RESISTANCE	FIRE RETARDANT

Sundance
Window Coverings