

SHADE
FABRIC
collection

Sundance
Window Coverings

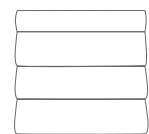
GALAXY

BLACKOUT (B/O)
0% OPENNESS FACTOR
DECORATIVE

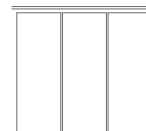
Galaxy has a traditional linen look, both elegant and natural, with a nostalgic structure and appearance adding to its character and beauty. Its subtle color palette with complete blackout properties provides a roller shade fabric perfect for boardrooms, media rooms, or bedrooms.



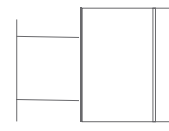
RO LLER
SH AD ES



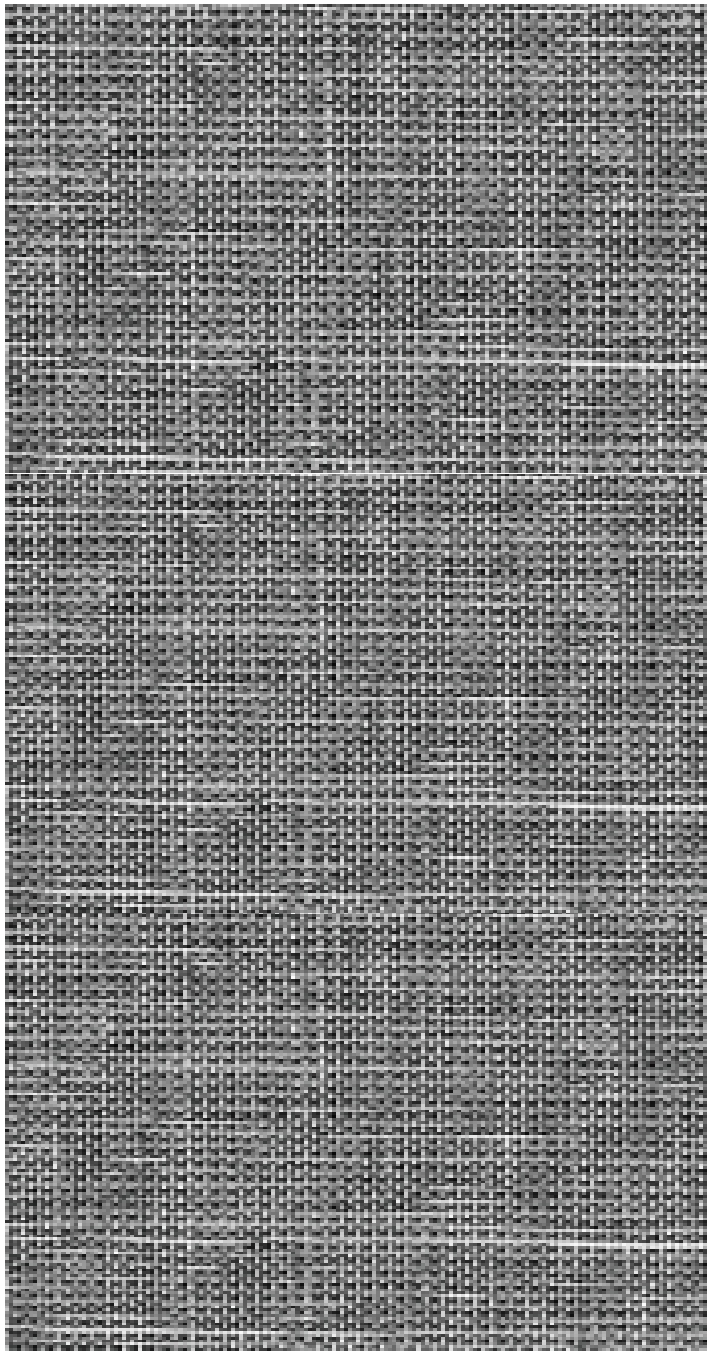
RO MA N
SH AD ES



PA NE L
TR AC KS

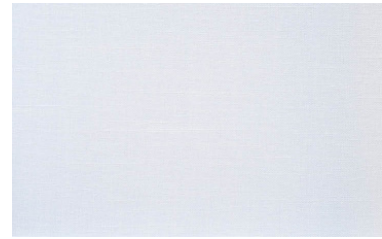


SK YLIGHT
TR AC KS



ECLIPSE

1904



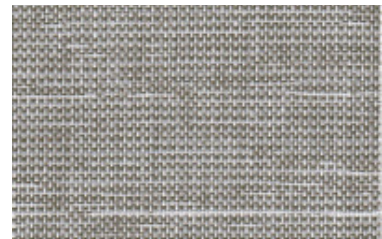
NOVA

1900



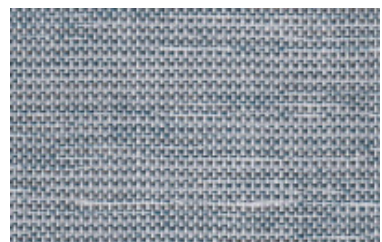
HALO

1901



JUNO

1902



ARIES

1903

FABRICATION METHODS

Cutting: Cold Cut, Ultrasonic, Crush Cut or Laser

Seaming / Hemming: Thermal, High-Frequency, Ultrasonic or Sewing.

PRODUCT SPECIFICATIONS

COMPOSITION	100% Polyester
ROLL WIDTH	118"
ROLL LENGTH	33 yd
WEIGHT / YD ²	12.61 oz/yd ²
THICKNESS	.029" ± 5%
COLOR FASTNESS	4.5 (AATCC 16-2003)

CARE AND CLEANING

Remove dust with vacuum cleaner or compressed air. Do not scrub. Do not use solvents or any abrasive substance which might damage the coating on the fabric. Clean with a sponge or a soft brush dipped in soapy water using mild detergent. Rinse with clean water. Leave the shade down until completely dry. You can also rub the fabric very gently with a clean white pencil eraser to remove small stains.

CERTIFICATIONS, TESTS, AND WARRANTY

CALIFORNIA TITLE 19	OEKO-TEX® STANDARD 100	UL GREENGUARD GOLD	ROHS COMPLIANT	10 YEAR WARRANTY	ASTM G-21 & E-2180
FLAME RETARDANT	FREE OF HARMFUL CHEMICALS	HEALTHY INDOOR AIR QUALITY	FREE OF HARMFUL METALS	QUALITY GUARANTEED	BACTERIA & FUNGAL RESISTANCE

Sundance
Window Coverings